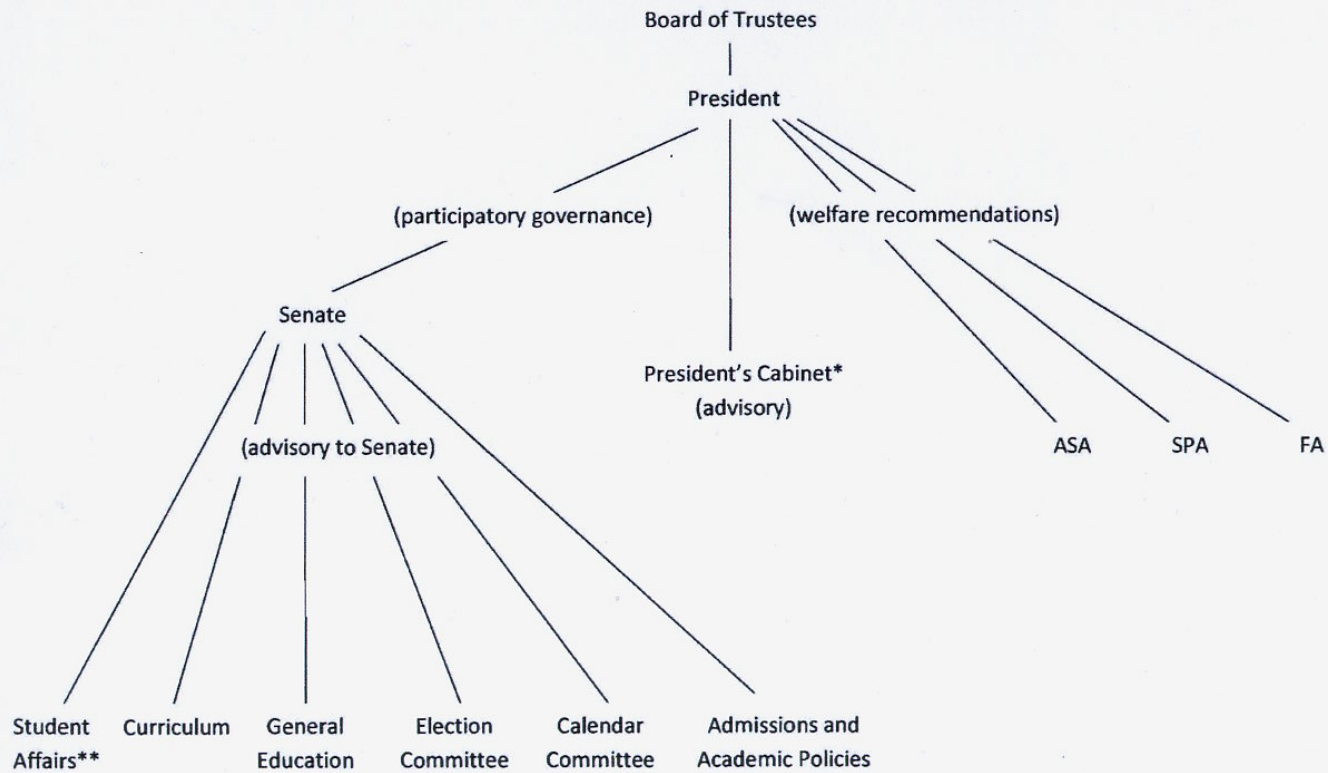




# Frederick Community College

## GOVERNANCE STRUCTURE



\*Recommended membership: Affinity Group Chairs, Senate Chair, PAS, SGA, President, President's Executive Asst. -- ex officio members include those who report indirectly to the President, i.e. Dir. Human Resources, Dir. of Resource Development, Dir. of Marketing and Public Relations

\*\*Recommended membership: a balance of students and staff, perhaps student and staff co-chairs; however, this committee is currently under revision by Senate and SGA. President's Cabinet awaits the result of that work.